

Products

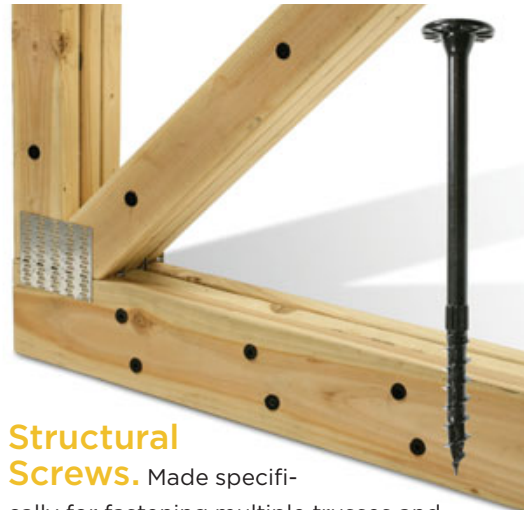
Proper Channels. *IQm Trim* cellular PVC moldings feature built-in J-channels that ease installation and hide cut ends. Integrated flashing fins help direct water away from

the structure. Flat trim boards, brick molding, and inside and outside corners are available.

The products come in 17 colors to match popular brands of fiber cement and

vinyl siding; they can't be painted. A 12-foot 6-inch length of 1x4 trim costs about \$27.

Tapco, 888/289-1169, iqmtrim.com.



Structural Screws.

Made specifically for fastening multiple trusses and engineered-wood assemblies, *Strong-Drive SDW* screws can be used to join up to four plies of 2-by or 1³/₄-inch-thick materials. Fastening can be done from one side of the assembly, which eliminates a lot of heavy lifting. The screws have a large, flat head and a partial-thread design that draws materials together tightly. They come in eight lengths from 2⁷/₈ to 6³/₄ inches and cost \$30 to \$90 for a box of 50.

Simpson Strong-Tie, 800/999-5099, strongtie.com.

Shingle Shades.

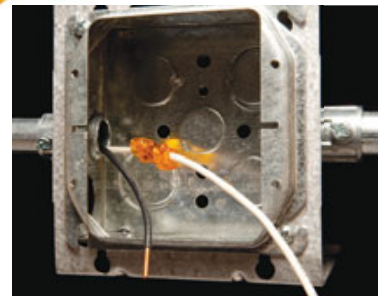
Owens Corning's *Designer Colors Collection* consists of Duration and Duration Premium architectural shingles in nontraditional color blends, including distinctive shades of red and blue. The 130-mph wind-rated premium shingles cost \$135 per square.

Owens Corning, 800/438-7465, owenscorning.com.



Crimp-Free Connection. With Ideal's *SpliceLine* in-line wire connector, you can make a butt splice with no twisting or crimping. The push-in connector accepts 20- to 12-gauge solid and 16- to 12-gauge stranded wires for quick connections in the box — a great way to prefab devices and make on-site installation faster. The low-profile design fits through 1/2-inch knockouts, and the clear polycarbonate body lets you see whether wires are fully inserted. Pricing is \$18 for 100 and \$50 for 300.

Ideal Industries, 800/947-3614, idealindustries.com.

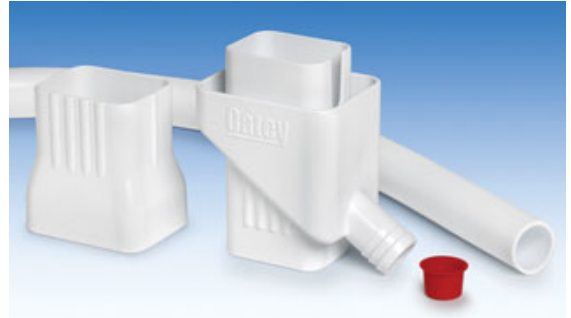


Products

Stylish Shutters.

Fypon has added to its line of molded urethane window shutters and now offers more than 140 options. In addition to louvered, raised-panel, and two- and three-board plank styles, the company offers *Three Board* shutters in rectangular and arch-top versions suitable for South-west house styles. The wood-grain texture can be painted or stained. A pair of rectangular 16-by-48-inch shutters costs \$155.

Fypon, 800/446-3040, fypon.com.



Simple Diversion. Oatey's *Mystic Rain-water Collection System* captures water from downspouts and redirects it through a tube into a rain barrel, which is not included. (Sealed rain barrels work best; common vented ones may overflow.) Leaves and sediment simply pass through the device, which can be attached to a downspout without removing the spout from the wall. The diverter costs \$20.

Oatey, 800/321-9532, oateymystic.com.

Healthy Water. Everpure claims that its *Viru-Pure* water filter is the first one in the world that can remove viruses. According to the company, the on-demand filter removes more than 99 percent of all viruses, bacteria, and cysts, along with more common chemical contaminants. It installs and operates just like any other undercounter unit and has a 500-gallon capacity — about a year's use for most households. The filter costs \$550; replacement cartridges are \$280.

Everpure, 800/323-7873, everpure.com.



Double Strength. *Tech-Plank* siding is twice as strong and noticeably lighter than fiber cement, Tech-Wood claims. Because the pine-and-polypropylene composite is made from long-strand fibers (from logging scrap) instead of fine sawdust, it's stiffer than other wood-plastic composites, says the company. Sold in four profiles, the siding comes in 78 paint or 24 stain colors and costs \$2.50 per square foot of coverage.

Tech-Wood, 866/575-6254, techwood.com.

Products



Concrete Connection. In addition to typical high-low drive threads, GRK's *Caliburn* concrete screws have a third groove that captures excess concrete dust so it won't interfere with penetration. The screws have star-drive heads, an ACQ-compatible finish, and jagged cutting teeth along the threads that tap a hole that can be used again and again, says the manufacturer. Washer, pan, and flat-head screws come in lengths from 1³/₄ to 5 inches. A 50-count box of 2¹/₄-inch screws lists for \$28.

GRK, 800/263-0463, grkfasteners.com.

Hammer Caps. When it comes to plastic exterior trim, hand-driven trim nails with painted heads are the fastener of choice, but hammer marks



can take a real toll on the installation. *Protect-O-Caps* help protect both the nails and the trim. The polyurethane caps — with the help of included shims — fit on many 16- and 20-ounce hammers. Some nail manufacturers include the caps in boxes of nails, or you can

buy them separately for about \$2 apiece. We got the best results when we changed caps as soon as their faces got a little chewed up.

Protect-O-Cap, 803/370-3329, protectocap.com.

Cold-Weather Glue. Most latex construction adhesives don't work well in freezing temperatures, but Liquid Nails' new *Extreme Temperature Formula* low-VOC subfloor and deck construction adhesive can be gunned by hand at temperatures down to 22°F. The latex-based formula will stick to wet, frozen, and treated lumber readily and won't dissolve foams and plastics the way some solvent-based adhesives do. A 28-ounce tube costs \$4.50.

AzkoNobel, 800/634-0015, liquidnails.com.



Salt-Free. Watts touts the *E-Treat Water Conditioning System* as an environmentally friendly alternative to conventional water softeners. Instead of salt, the product uses "anti-scale media" — as the company calls it — to convert calcium ions to tiny crystals that can't attach to surfaces and become scale deposits. The 13-inch-by-65-inch tank uses no electricity, requires no backwashing, and is simple to install. The system costs about \$1,320.

Watts, 800/659-8400, watts.com.

