

BY LAUREN SHANESY



1

1. Instant Filtered Water

Pfister's new Lita Filter Faucet incorporates the company's "Xtract Filter Mode," a built-in filtration system for purifying water. According to the company, the integrated filter removes chlorine, mercury, pesticides, and other chemicals that can be found in tap water, and the high-flow system delivers filtered water two times faster than most conventional systems. Users can switch between tap-water and filtered-water modes by pushing the faucet handle back. The faucet ranges in price from \$625 to \$675. pfisterfaucets.com



2



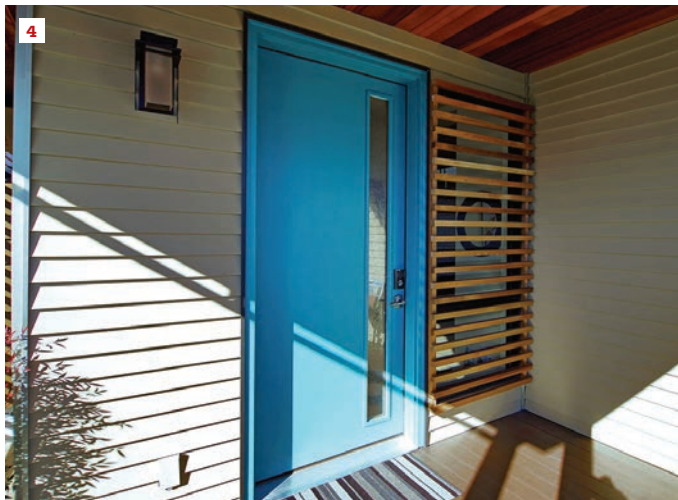
3

2. A Window With Double-Digit R-Value

The new Zenith series ZR10 double-film fixed picture window from Alpen High Performance Products offers a .10 U-factor—which corresponds to an R-value of 10—the highest of any commercially available window in the U.S., the company claims. The high-performance windows block 99% of UV rays, resist condensation and air infiltration, reduce noise, and offer warm interior glass surface temperatures in cold-climate winters and cool interior glass surface temperatures in warm regions, says the maker. Pricing varies. thinkalpen.com/r10window

3. A Synthetic Underlayment for Metal Roofing

Made from plastic fibers that are spun-bonded into a nonwoven mat, the new Synthetic Guard Plus Underlayment from Tamko Building Products is printed with lay lines and cap-nail locations—including locations for high-wind applications—for easy installation. The underlayment is ideal for metal roofing, as well as for mechanically fastened-tile, wood-shake, asphalt, slate, and composite roofing, says the company. Pricing varies. tamko.com/residentialroofing



4

4. A Water Barrier for Contemporary Doors

Simpson Door Co. has expanded use of its "Water-Barrier" technology to contemporary, flush doors made from any kind of wood and featuring different shapes, designs, and windows with standard raised or flush Shaker moldings. The water barrier combines a moisture-resistant overlay with a thermoset acrylic latex topcoat on the door's exterior. The moisture-resistant surface can then be painted any color for a contemporary finish. Pricing varies. simpsondoor.com

Products

5. Seamless Finish for Pocket Doors

Pocket doors are now easier to finish, with Johnson Hardware's Universal Jamb Kit, a set of jamb pieces that can be cut to fit any kind of pocket door frame up to 3'-0" x 6'-8" x 1 3/8" in a 2x4 wall. The pieces can be cut to length and nailed in place, eliminating guesswork. The opening can then be finished with a casing of choice (not included in the kit). The kit includes a strike jamb, split jamb, and split header. Pricing begins at \$50 for the factory-primed model and \$68 for the stain-grade clear-pine model. jhusa.net/1510.aspx

6. Electronic Flood Sensor

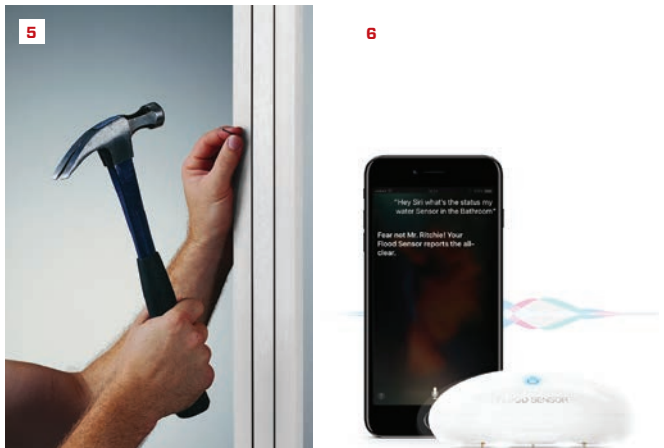
The Fibaro Flood Sensor is the first flood sensor to be introduced to Apple's HomeKit system. Equipped with gold telescopic probes, the Flood Sensor can detect water as soon as it appears, even on uneven surfaces. If water is present, an LED indicator and sound alarm will trigger to alert homeowners on their smartphone through the Apple Home app. The Flood Sensor also has a temperature sensor, allowing homeowners to check unheated areas, like a basement or garage, for winter problems such as burst pipes. Paired with Fibaro's new iOS 10 app, the device can be controlled remotely through voice commands using Siri. The sensor is priced at \$70. fibaro.com/us

7. A Storage Solution for Forgotten Kitchen Space

The Toe Space Drawer from Dura Supreme Cabinetry increases kitchen cabinet storage by utilizing a space that is commonly forgotten. Fitted along the bottom of any straight 18-, 21-, or 24-inch cabinet, the extra drawer increases storage without adding square footage to the kitchen. The touch-latch mechanism allows users to open the drawer with the touch of their foot, eliminating knobs or handles. The drawer is priced at approximately \$125. durasupreme.com

8. Easily Transform Countertops

Caesarstone's new Transform line of countertops is the first surface overlay from the company. The quartz overlay fits over existing kitchen and bath countertops, allowing for a new look without extensive construction or demolition in the space. The material is low maintenance and is scratch, stain, and heat resistant, according to the company. The Transform overlays will be available in select colors. Pricing varies by color and ranges from \$50 to \$60 per square foot. caesarstoneus.com





9

9. An Effortless Patio Door

The automated Multi-Slide Patio Door from Weather Shield can be controlled by a discreet push-button panel on the wall or connected to most smart-home systems through a smartphone app. It can be installed in openings as large as 50 feet wide and 10 feet tall, and it's available in single and bi-parting options with either 1³/₄- or 2¹/₄-inch-thick door panels. Sensors prevent the door from closing on a person, an animal, or an object, and the system has a battery backup to power a limited number of operations in case of a power outage. Pricing varies by dealer. weathershield.com



10

10. A Strong Adhesive

RM Lucas has introduced single-component non-skinning butyl to its line of adhesive sealants. The #8660 provides a permanent seal between concealed end-laps, metal roof panels, standing-seam roof panels, ridge cap, wall panels, and other areas that require a nonhardening weather seal. The sealant comes in a neutral color, and while prices vary by distributor, the company estimates the cost at \$6 to \$7 per tube. rmlucas.com



11

11. Liquid Barrier Fills Nooks and Crannies

This new liquid flashing from GCP is ideal for difficult detail areas. Perm-a-Barrier is a fluid-applied flashing that protects hard-to-reach areas, such as joints and fasteners, of window and door rough openings from air and water entry. According to GCP, the flashing provides an airtight seal, is water-vapor permeable, and prevents moisture from being trapped in the wall cavity. It fully bonds to framing without priming, adheres to common construction substrates (such as wood, block, concrete, and metal), is damp-surface tolerant, and eliminates the need for joint reinforcement tapes. Pricing varies. gcpat.com/construction/en-us



12

12. Hidden Support for Floating Countertops

Federal Brace is expanding its line of hidden countertop supports with the Harrison Top Plate, a steel-plated brace with two extended arms on each side. The support is ideal for knee- or pony-wall applications, such as breakfast bars or serving areas, where the look of a floating counter is desired. The plate supports countertops weighing up to 375 pounds and extending past the end of the plate 4 inches or less. It's available in three sizes with either 10-, 12-, or 14-inch supports and a 3.25-inch center plate. Prices start at \$88 and increase with size. federalbrace.com