

### 1. Cool Deck Stain

Sherwin-Williams's SuperDeck exterior waterborne deck stain is now available in an IR Reflective version that the company claims can help keep wood decking up to 20°F cooler than conventional stains. The new stain contains pigments that the company says will reflect solar rays, helping reduce surface temperatures of decks exposed to direct sunlight. The stain can be applied to both new and previously stained wood, as well as over most composites. Available in 20 colors, it costs about \$55 per gallon at a Sherwin-Williams store. [sherwin-williams.com](http://sherwin-williams.com)

### 2. A High-Efficiency Combination Boiler

The A. O. Smith ProLine XE Combi Boiler delivers space heating and immediate hot water. The maker says the boiler offers easy installation, set-up, and maintenance, and has a user-friendly interface with a backlit LCD display. It's available in 110,000, 150,000, and 199,999 Btu/hour models, delivering up to 4.8 gallons of hot water per minute—the highest capacity in the combination-boiler category, says the company. The boiler comes with a five-year parts and 10-year heat-exchanger limited warranty. Pricing is set by distributors. [hotwater.com](http://hotwater.com)

### 3. Interior Paint for High-Volume Jobs

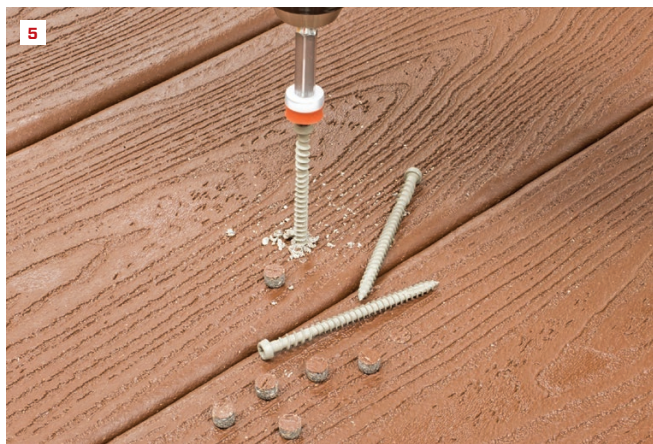
Designed for volume home builders, PPG's Builder Performance interior latex wall and ceiling paint reportedly offers quality finishes and color consistency for routine touch-ups. The company states that the product removes the guesswork from color-matching previous paint jobs, and its application characteristics make it easy to apply by spraying, brushing, or rolling to provide a uniform, flat finish that hides tape joints and surface imperfections. The palette includes PPG's top 10 neutral hues in a low-odor finish. The paint retails for less than \$30 per gallon at most paint suppliers. [ppgpaints.com](http://ppgpaints.com)

### 4. Cold-Weather Flashing

MFM Building Products says that its DeckWrap PowerBond self-adhering and self-sealing waterproofing membrane will aggressively bond to wood or metal surfaces in temperatures as low as -25°F. Designed for use on PT ledgers, joists, and posts, the 25-mil-thick membrane is available in 75-foot-long rolls in 3-inch or 6-inch widths for \$288 each, and in 12-inch-wide-by-25-foot-long rolls for \$78 each at [mfmbp.com](http://mfmbp.com).



BY LAUREN SHANESY



### 5. Auto-Feed-Compatible Plug System

Simpson Strong-Tie's Deck-Drive DCU hidden deck-fastening system consists of the company's DCU composite screws (available in carbon steel and 305 and 316 stainless), DCU screw plugs, and an auto-set driver bit (each component sold separately). The company says that the system is compatible with its Quik Drive auto-feed screw gun. Plugs are available for Trex and Azek decking and PVC trim products for about \$55/375 count (plugs only). Full pricing varies by screw size and material, dealer, and region. [strongtie.com](http://strongtie.com)



### 6. A Smart Shower Control Panel

Grohtherm SmartControl trim can have up to three shower outlets running through one wall plate. Users control temperature and flow rate from push and turn buttons on the thermostatic panel, while a Rapido SmartBox valve powers the system behind the wall. The trim is available in either a round or square style, with a chrome, brushed nickel, or white finish, ranging in price from \$534 to \$820. The Rapido SmartBox valve costs \$120. [grohe.com](http://grohe.com)



### 7. A Quiet Air Handler

Lennox touts its high-efficiency CBA38MV Air Handler as the quietest on the market. It has a programmable variable-speed blower motor, allowing for consistent control over temperature and humidity levels in individual rooms. Its evaporator coils are made from a corrosion-resistant aluminum alloy, which provides reliable resistance to environmental contaminants, says the company. Pricing is determined by local dealers and varies by the size of the space to heat and cool. [lennox.com](http://lennox.com)



### 8. Exterior-Grade Filler

Dap's Platinum Patch weatherproof exterior filler is designed to fill gouges and holes in porous and nonporous substrates, including wood, vinyl, PVC, composites, and metal. It's premixed, and Dap says it can be sanded or painted within 2 to 4 hours after application, depending on temperature and humidity. The filler is applied with a putty knife (it can be used on interiors too), with multiple layers required for deeper cracks. Once it's fully cured—which takes about 24 hours—Dap says that the waterproof repair won't blister, crack, swell, or shrink, and is mold, mildew, and algae-resistant. We found an 8-pack of 32-ounce pails online for \$95. [dap.com](http://dap.com)

## Products

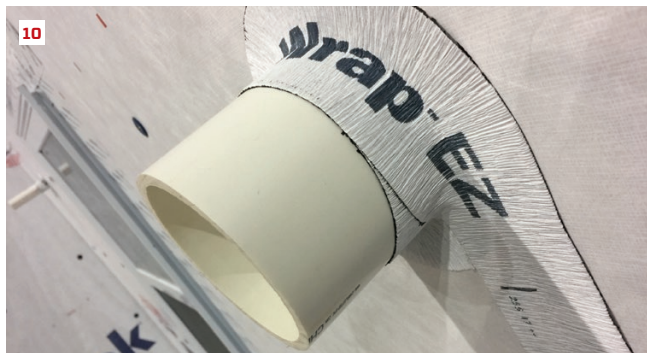
### 9. Beach-Inspired Roof Tiles

Boral Roofing has introduced a set of six neutral color blends inspired by beach landscapes to its Saxony 900 Slate concrete roof tile collection. The company says that the tile is low-maintenance and has a Class-A fire rating and that it is made from locally-sourced, naturally occurring material and is fully recyclable at the end of its anticipated 75-year lifespan. The new colors are available in the southeastern and northeastern U.S. and cost the same as existing colors in the Saxony 900 Slate line. [boralamerica.com](http://boralamerica.com)



### 10. Flexible Flashing Tape

The DuPont FlexWrap EZ Adhesive Tape is the latest addition to the company's 100% butyl-backed line of home envelope sealing products. The self-adhering FlexWrap EZ tape, which measures 2<sup>3</sup>/<sub>4</sub> inches wide, is designed to seal around small wall penetrations. According to the manufacturer, it is ideal for flashing around electrical, HVAC, and plumbing connections and its use reduces the opportunity for air leaks around these penetrations. The tape is available in 15-foot rolls, with a split release liner for easy installation. Pricing varies by dealer. [flexwrapez.dupont.com](http://flexwrapez.dupont.com)



### 11. Waterproofing Kit for Baths

Schluter Systems' new Kerdi-Board Kit includes everything an installer needs to waterproof walls around an acrylic shower base or standard tub surround before tile installation. The kit includes eight pieces of 1/2-inch-thick, 48-inch-by-38-inch Kerdi-Board waterproof building panels, a 5-inch Kerdi-Band waterproof membrane, and two tubes of Kerdi-Fix sealing and bonding compound, which can create a waterproof seal around the shower base or tub flange. A 4 1/2-inch mixing-valve seal, 3/4-inch pipe seal, and 1/2-inch pipe seal are also included. The kit costs \$600. [schluter.com](http://schluter.com)



### 12. Lateral Load Anchor Kit

FastenMaster has a new metal connector, the LTS, that should make it easier to meet the prescriptive lateral load provision in the IRC. A unique feature of the LTS system is that the long tension transfer screw can be installed first, and the bracket added later. A kit (good for one deck) consists of four LTS brackets, 32 bracket-mounting screws, four tension-transfer screws with 3 inches of thread, and a pair of bits; it costs about \$38. [fastenmaster.com](http://fastenmaster.com)

