

BY VINCENT SALANDRO



1

1. Smart Breaker Panel

Designed to allow homeowners to prioritize their energy needs in an age of electric vehicles and site-produced power with battery storage, the Span Smart Panel offers visibility and control over circuits and major appliances. Users can decide how to power specific devices at certain times through a mobile app. The product supports Ethernet, Wi-Fi, or Bluetooth connections. Weather-resistant, according to the manufacturer, the panel can be installed indoors or out. Pricing, including installation and shipping, is \$3,500. span.io



2

2. Minimalist Faucet Collection

The Origini by Gessi bathroom faucet collection is offered in five color palettes and in seven styles, including a space-saving, wall-mounted faucet and an arched, three-hole basin mixer (pictured in the accent palette of ochre, matte black, and brass) in medium and tall versions. A finish insert fits inside the faucet knobs, adding an extra element of color and customization. Pricing ranges from \$800 to \$1,400, depending on size and finish. gessi.com



3

3. Keyless-Entry Smart Locks

EMPowered Smart Locks from Emtek can integrate with smart home technology. Installed with only a screwdriver, the electronic locks replace existing deadbolts and offer keyless entry, one-touch locking, and remote access and monitoring. The EMPowered Motorized Smart Keypad Lock features a smart deadbolt and a back-lit touchscreen. The smart locks have motors powered by four AA batteries, and angled nose-bolts that can accommodate misaligned doors. emtek.com



4

4. Colorful Natural Stone Sinks

Crafted from 70% crushed natural stone and minerals blended with resins, Ruvati's epiStone series of bathroom sinks are available in a 19-inch-by-14-inch curved-vessel base Canali model and a 23-inch-by-15-inch straight-sided Omnia model. Ruvati says the nonporous surface is easy to maintain, and the oval silhouette was designed with water drainage and cleaning in mind. The sinks come in five colors ranging from matte white to avocado lime green. ruvati.com

Products

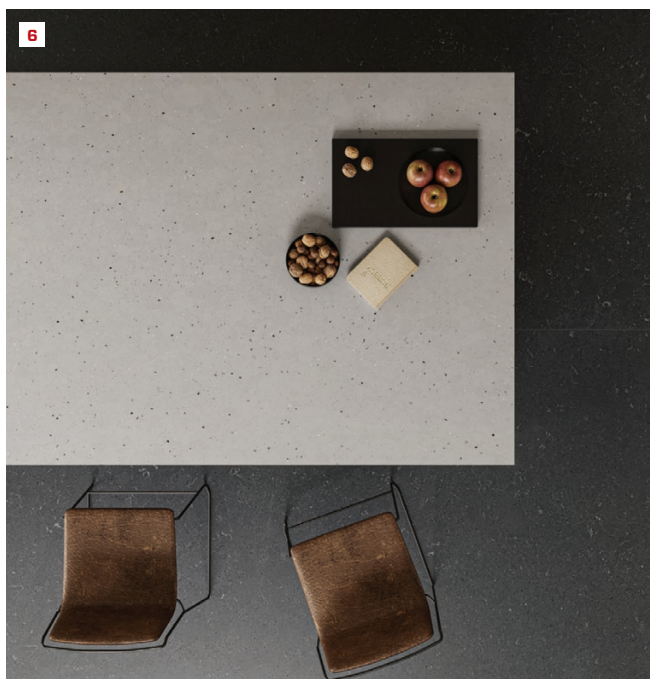
5. Radiant Heat Retro-fit

QuietWarmth Joist Heat Mats for under subfloors are designed to add warmth to existing flooring, including nail-down wood floors and carpet. Installation entails stapling the flexible carbon film between 16-inch-on-center subfloor joists and running pre-attached lead wires to an available thermostat. The mats can be cut to length and come in 120V and 240V versions. We found a 17-inch-by-5-foot 120V mat online for about \$50. mpglobalproducts.com



6. Urban Countertop Surface

Cosentino's Silestone Urban Crush countertops are manufactured using 99% reused water and 100% renewable energy, and a minimum of 20% recycled raw material in their composition. Materials such as concrete, limestone, bronze, and ash help create a moisture-, stain-, acid-, and scratch-resistant surface, according to the manufacturer. Available colors are lime delight (pictured), concrete pulse, brass relish, and cinder craze. cosentino.com



7. Single-Room Air Purifier

The Broan-NuTone single-room Air Purifier (model BNAP-100) employs True HEPA filtration and emits no ozone during operation, according to its manufacturer. When the unit's auto-sensing technology detects TVOCs or particulates the size of respiratory droplets, dust, and pollen, the fan speed automatically increases to remove them, then switches back to maintenance speed once the air is clean. In addition, the surface of the unit's filter is treated by a built-in ultraviolet light. It retails for approximately \$350. broan-nutone.com



8. Energy Storage System

Panasonic's Evervolt Home Battery System supports both DC and AC coupling, allowing for integration with new and existing solar installations. The system combines a hybrid inverter and lithium-ion battery with an Evervolt SmartBox, which can switch to the battery during outages to supply up to 7.6kW of continuous power to a home. Up to four Home Batteries can be used with each SmartBox to achieve up to 30kW of power and 72kWh of usable energy; maximum battery capacity per system is 18kWh. The unit can be floor- or wall-mounted indoors or installed outdoors. na.panasonic.com



9

9. Durable Circular Saw Blade

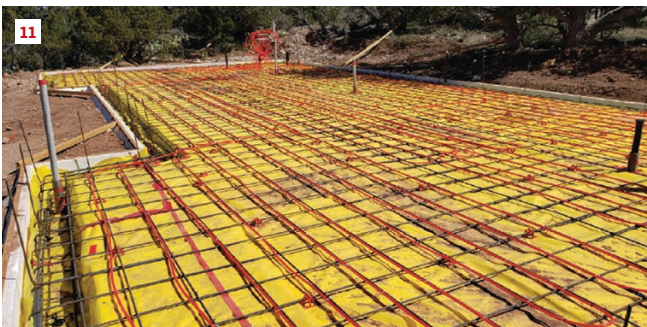
Designed for cutting through nail-embedded wood and abrasive materials such as asphalt shingles, Diablo's Demo Demon Framing/Demolition circular saw blade is well-suited for demolishing old roofs, siding, subfloors, etc., according to the manufacturer. Diablo says the Dura-Blend carbide used in the blades provides up to 15 times the cutting life of standard carbide blades, and the saw's carbide teeth are ground to tight tolerances for improved tracking control. A thin-kerf design promotes speed and accuracy. The suggested retail price is \$15. diablotools.com



10

10. Bathtub Drain Technology

California Faucets' sleek ZeroDrain is now available for bathtub applications in more than 25 finishes. Made from high-quality brass, ZeroDrain for tubs offers a cleaner aesthetic, quicker installation with fewer parts, and easier maintenance than other drains, along with virtually clog-free operation, according to the manufacturer. California Faucets says ZeroDrain fits drop-in or free-standing bathtubs with a standard hole size and with integral (molded into the tub wall) overflow. Prices for ZeroDrain start at \$730 for a polished chrome finish. calfaucets.com



11

11. Shallow Foundation Form

Mono Slab EZ Form for shallow foundations complies with IRC, IBC, and IECC code requirements, combines forming and insulating into a single step, and allows backfilling before concrete placement. Mono Slab says the product is easy to use and saves users time, labor, and money. The only additional materials needed are wood or steel stakes and standard 2x8 lumber. Mono Slab is available in seven different forms. monoslabezform.com



12

12. Trimboard Protective Film

Westlake Royal Building Products offers its Kleeer Protective Film on Kleeer Trimboards and Sheets with both smooth and wood-grain surfaces. The film is designed to protect the trim against dust and dirt during storage, handling, and installation. The manufacturer says the film, which should be removed immediately upon installation of the trim, peels off easily without leaving residue behind. Products with the film applied should not be exposed to direct sunlight for extended periods. kleeerlumber.com