

BY VINCENT SALANDRO



### 1. Versatile Workstation Sink

For its Quartz Classic Undermount Workstation sink, Zurn Elkay Water Solutions combined natural quartz and high-performance acrylic resin to create a nonporous sink surface that the firm says can stand up to daily use. The workstation, including an acacia wood cutting board, colander, drying rack, roll-up drying rack, bottom grid, and color-matching drain, costs \$880. There is also a four-piece workstation kit for \$640. [elkay.com/us/en.html](http://elkay.com/us/en.html)



### 2. Solar-Charging Hearing Protection

3M touts its WorkTunes Connect + Solar Hearing Protector as the first solar-charging wireless Bluetooth hearing protector for the consumer market. The headset integrates innovative solar cell technology, developed by Powerfoyle for electronics, that continuously charges with both outdoor and indoor light. Like other WorkTunes models, it has a noise reduction rating of 26 dB, and its built-in microphone allows users to make and take phone calls, while background noise reduction enhances call clarity. It sells for \$170. [3M.com/worktunes](http://3M.com/worktunes)

### 3. PVC-Free Corner Bead

Designed with a memory-free hinge that adjusts to any angle on inside and outside corners, Pro-Flex300 from ClarkDietrich is a muddable, PVC-free, flexible corner bead with a reinforced paper backing. According to the manufacturer, the product installs with less compound than standard corner beads do; because the paper surface is pretreated to accept paint, finishing compound is not required over the laminated area. The 3-inch corner bead is packaged in 100-foot rolls. [clarkdietrich.com](http://clarkdietrich.com)



### 4. Clear Flashing Tape

Most flashing tapes obscure nail and screw fin patterns on windows, but Typar's Clear Acrylic Flashing tape allows better visibility during installations and inspections. The tape's transparency is achieved with the manufacturer's waterproof, self-healing acrylic adhesive, which can be applied in temperatures down to 20°F. The tape has a split-release liner for simpler film removal. It comes in 75-foot rolls in 4-, 6-, 9-, and 12-inch widths. [typar.com](http://typar.com)

### 5. Cold Climate Heat Pump

Bosch Home Comfort's IDS Ultra ColdClimate Heat Pump reportedly operates in climates reaching temperatures as low as -13°F, with 100% heating capacity down to 5°F. The unit's Enhanced Vapor Injection (EVI) compressor borrows extra heat from the hot side of the refrigerant cycle, redirecting it to warm the home. Additionally, the pump features demand response capability, allowing utilities to manage electrical loads prior to peak usage time, and it complies with new low global warming potential A2L refrigerant requirements. [bosch-homecomfort.us/ultra](http://bosch-homecomfort.us/ultra)

### 6. Push-to-Connect Pipe Fitting

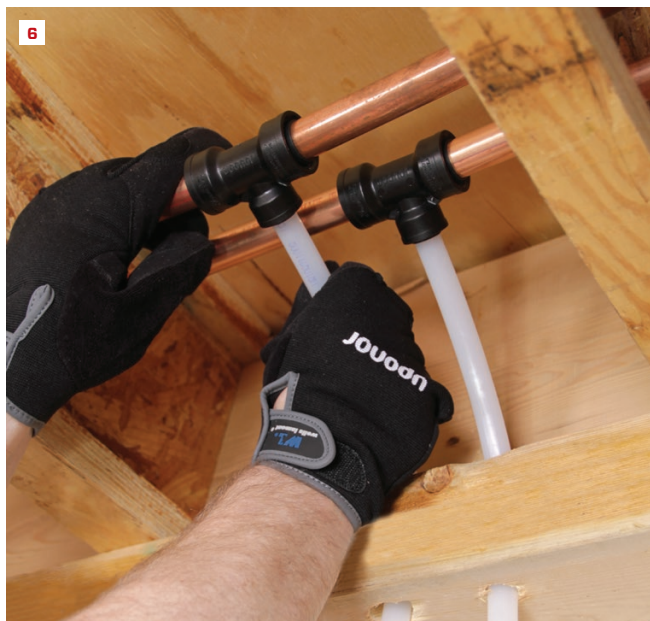
A professional-grade engineered polymer push-to-connect fitting, TotalFit from Uponor works with PEX, PE-RT, CPVC, and copper piping systems. The fittings can be used to repair potable hot-water and cold-water distribution piping systems in single-family homes, townhomes, apartments, and condos. TotalFit is approved by the Uniform Plumbing Code and International Plumbing Code for installation in a concrete slab, direct burial in the soil, and behind walls without access panels. [uponor.com](http://uponor.com)

### 7. Rod Coupler Anchor

Designed to be used with a single-story or multistory rod tie-down system, the Titen HD Rod Coupler anchor from Simpson Strong-Tie is now available in a 1/2-inch-by-9 3/4-inch size with a head style that accepts 3/8-inch-diameter threaded rod. The manufacturer says the anchor is a fast and simple way to attach threaded rod to a concrete stem wall or thickened slab footing; installation requires no special tools, cure time, or a secondary setting process. It's code listed in ESR-2713 for both wind and seismic loading. [strongtie.com](http://strongtie.com)

### 8. Combi Gas Boiler

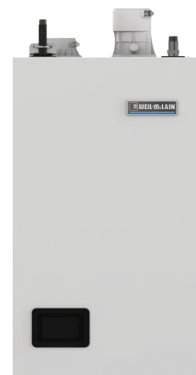
Weil-McLain's Simplicity high-efficiency (95% AFUE) combination gas boiler is designed to provide both hydronic space heating and domestic hot water (though it can also be installed as a heat-only unit). The boiler has an insulated stainless-steel firetube heat exchanger with a vertical "self-rinsing" orientation for easier maintenance, and the touchscreen display reportedly simplifies setup and troubleshooting for service technicians. It's available in sizes of 110, 150, and 199 MBH. [weil-mclain.com](http://weil-mclain.com)



7



8





## Products

### 9. High-Efficiency Ventilation Timer

Deako's Simple Ventilation Timer can improve the efficiency of bathroom exhaust fans used to meet continuous ventilation requirements. When connected to an exhaust fan, the timer can be set to automatically run the fan for 0 to 60 minutes every hour. It also has 10-, 30-, and 60-minute timer buttons for manual operation—which the unit “counts” toward any ventilation scheduled in the same hour. The timer—with an MSRP of \$75—is sold separately from Deako's backplates. [deako.com](http://deako.com)



### 10. Diffusive Floor Heating System

Laticrete's Strata\_Heat Radiant Floor Heating system includes Spliceless Wire, a high-performance floor heating wire; an uncoupling mat; a Wi-Fi-enabled thermostat; and Thermal Pack, a heat-conductive thin-set additive. According to the company, when added to Laticrete modified thinset, the Thermal Pack enables diffusion of heat throughout the thinset from the heating wire, thereby eliminating cold spots. A Wi-Fi-enabled thermostat allows users to control and monitor temperature. [laticrete.com](http://laticrete.com)



### 11. Yakisugi Siding

Yakisugi, a traditional Japanese siding from Nakamoto Forestry, is a maintenance-optional building material hardened and preserved through a charring process. Made from cypress, Yakisugi is intensely burned as a preservative heat treatment. Nakamoto Forestry manufactures three variations of yakisugi in 35 finish options: suyaki, the original charred surface; gendai, a surface wire-brushed only once to removed the charred textures; and pika-pika (pictured), a surface wire-brushed twice to achieve a topographic texture that is lighter in color. [nakamotoforestry.com](http://nakamotoforestry.com)

### 12. Mortarless Column Wrap

Ply Gem's column wrap product, now under the ClipStone brand name, can be installed in approximately 30 minutes with everyday tools and no masonry skills required. The mortarless stone veneer wraps around existing 4-, 6-, or 8-inch pressure-treated posts, providing the look of a 14-inch-by-14-inch natural stone column. The veneer is available in the ProStack (four color options) and Northern Ledge (five color options) styles of stone. [plygem.com](http://plygem.com)

