

BY SYMONE GARVETT

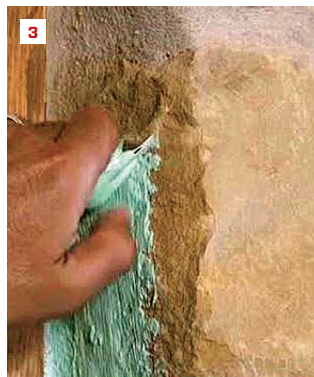


### 1. Performance Siding

Ply Gem has launched its new Performance Collection of vinyl siding, soffits, and accessories. This durable, low-maintenance siding coordinates well with other low-maintenance exterior materials such as stone, says the manufacturer. Its seven product lines range from traditional clapboard profiles to the look of rough-sawn cedar siding. Several styles can withstand winds of up to 200 mph, Ply Gem says, and are offered in many colors. All are covered under a limited lifetime warranty. Contact a local distributor for pricing. [plygem.com](http://plygem.com)

### 2. Supreme Sealer

Sherwin-Williams' newest coating, Extreme Block Primer/Sealer, is designed to quickly seal off tough surface stains, including fire, smoke, and nicotine, on both interior and exterior surfaces. The oil-based primer adheres to multiple substrates, including wood, drywall, masonry, and prepared metal, and is easy to sand to a uniform surface, according to the manufacturer. Primed surfaces may be top-coated with either acrylic or alkyd coatings after as little as two hours of drying. Prices run around \$42 a gallon. [sherwin-williams.com](http://sherwin-williams.com)



### 3. Liquid-Applied Masking

Peel-Tek's flagship product, Peel-Tek 150, is a temporary coating designed to protect both porous and nonporous surfaces from damage during construction. The coating is brushed or rolled on, so it may be used to protect rough surfaces that would otherwise be difficult to mask. When it's no longer needed, it peels away, and reportedly leaves no residue. It's available in one quart, one gallon, and 3 1/2 gallons. Pricing is \$20 per quart and \$69.50 per gallon. [peel-tek.com](http://peel-tek.com)



### 4. Resilient Cabinetry

Perfect for outdoor kitchens, WeatherStrong outdoor cabinetry is made from a 3/4-inch marine-grade waterproof polymer. The manufacturer reports these cabinets are assembled with precisely positioned dowels and a fast-cure, solvent-free adhesive. Door pulls, hinges, and drawer runners are 316 stainless steel. The factory finish is an embossed wood-grain texture that's offered in four styles and three colors. Pricing starts around \$175 to \$250 per linear foot, depending upon model and door style. [weatherstrong.com](http://weatherstrong.com)

## Products

### 5. Narrow Ceiling Cassettes

Mitsubishi Electric's MLZ Series One-Way Ceiling Cassette air-conditioning unit features a narrow body and is designed to fit within standard 16-inch joist spacing. According to the manufacturer, the cassettes are effective regardless of ceiling height because of their adjustable airflow. An auto vane control is capable of adjusting air direction based on a homeowner's needs. The unit can be serviced from underneath, without requiring an access panel. Prices vary based on installation labor, components, and the type of unit. [mehvac.com](http://mehvac.com)

### 6. Durable, Waterproof Flooring

Rigid Core Vantage from Armstrong Flooring is a hardwood-look-a-like flooring in an extra-long plank format. The manufacturer says that it is structured for durability, even under high traffic, high moisture, and high impact, and that it is water-proof and will not swell or buckle when exposed to water. The flooring boasts a dense polymer composite core for dent resistance and a commercial-grade wear layer, and it carries a 30-year limited residential warranty. Pricing varies by distributor. [armstrongflooring.com](http://armstrongflooring.com)

### 7. Industry-First Brick Tie

Narrow air spaces behind brick veneer risk being filled up with mortar droppings, which can block airflow and drainage. Simpson Strong-Tie's new BTH brick tie can connect brick and stone veneers across spans up to 3 inches, allowing for a wider space. Fabricated from 22-gauge galvanized steel, it is field-adjustable in two places and can be installed with either side facing up, providing strength and versatility. Tie ends embed in mortar, a minimum of 1 1/2 inches and connect to framing with a single 0.131-by-2 1/2-inch nail. Retail pricing ranges from 18 to 22 cents each, depending on the distributor. Carton quantity is 500. [strongtie.com](http://strongtie.com)

### 8. Voice-Enabled Smart Lock

Yale Locks & Hardware recently announced a partnership with Comcast's Xfinity Home service. Smart locks in Yale's Assure Lock line can now be connected to the system—when purchased with a Yale Zigbee Network Module—to allow homeowners to lock and unlock their doors with a mobile app or X1 voice remote. Besides locking and unlocking the doors, users can also check the lock status and receive notifications if the door is unlocked. Pricing ranges from \$130 to \$170 and up. [yalehome.com](http://yalehome.com)





## Products

### 9. Slim-Line LED

With its slim profile, the surface-mounted Surf LED fixture by Nora Lighting is designed to mimic the look of a recessed light but allow for easier air-sealing. The fixture may be installed over both standard and fire-rated J-boxes. The luminaire is edge-lit and uses an embedded honeycomb lens light guide for even distribution. The light offers 90+ CRI, and features a regressed lens with a deep, grooved white baffle. It is available as a round or square aperture in 4-inch, 6-inch, and 7-inch sizes. Its DC dimmable driver allows an adjustable lumen output from 650 to 1,000 lumens. Pricing ranges from \$44 to \$54. [noralighting.com](http://noralighting.com)



### 10. Farmhouse Sink

Franke has introduced a new Farmhouse Sink Collection, which is characterized by a reversible apron front that allows homeowners to choose between a smooth or fluted surface during installation. Its polished finish is designed to be easy to clean and to stand up to heavy use, according to the manufacturer. The sink comes in a range of sizes and colors, with MSRPs ranging from \$1,500 to \$1,750. Optional bottom grids, cutting boards, and strainer baskets are available. [franke.com](http://franke.com)



### 11. Stop Leaks From Self-Leveling Underlayment

A new patent-pending system called EdgeBan helps with leak-proof installation of self-leveling underlayment. EdgeBan creates a barrier around potential run-out areas, including wall gaps, toilet flanges, and floor vents. The maker says that its "Leveler Lock" design not only will seal run-out spots but will integrate with the underlayment, forming a strong bond and solid substrate to install flooring material over. Offered in strips, circles, and rectangles, each variation is easy to cut and simple to install, according to the manufacturer. Pricing for the parts ranges from \$4 to \$72. [edgeban.com](http://edgeban.com)



### 12. Indoor/Outdoor Fridge Drawer

Thor Kitchen has expanded its line of affordable, professional-style kitchen appliances with a new 24-inch Indoor/Outdoor Refrigerator Drawer. The drawers are built from 304 stainless steel and provide 5.3 cubic feet of packing capacity at a consistent internal temperature between 50°F and 32°F. Its ventilated cooling system is designed to automatically defrost its evaporator, which the maker says helps to prevent humidity buildup or freezing. Other features include self-close hinges, LED interior lights, and digital setting controls. Pricing starts at \$1,300. [thorkitchen.com](http://thorkitchen.com)

