

BY SYMONE GARVETT



1. Durable Quartz Surfaces

Each of four new surface profiles—Tartarus, Moreno, Chacra, and Savoie—in Daltile's Natural Quartzite collection is available as a countertop or as an extra-large stone slab surface. According to the manufacturer, the Natural Quartzite surfaces are harder than granite, offer a long usable life, and resist heat, stains, scratching, and etching. Tartarus (pictured, left) is dark with subtle veins, Moreno features a gray stone pattern, Savoie is a "griege" color with a terrazzo look, and Chacra is light gray with dark veins. Contact a local distributor for pricing. daltile.com



2. Metal-Roof Snow Guard

National Nail's Stinger Mini SnowGuard is designed to stop ice and snow from sliding off metal roofs. The Mini SnowGuard features a self-sealing gasket system that requires no silicone, eliminating the mess associated with sealants. Additionally, the SnowGuard's patented weathertight gasket system allows for installation at any temperature, according to the manufacturer. The product is available in 12 colors and a clear finish. Each box includes 50 Mini SnowGuards, 50 weathertight gaskets, and 150 all-weather coated screws. Pricing starts at \$120. stingerworld.com



3. On-Trend Shiplap Wainscoting

Royal Building Products' 6-inch and 8-inch cellular PVC Nickel Gap Shiplap can be installed vertically or horizontally in exterior as well as interior trim applications. Both sizes are available in 9-foot, 12-foot, and 16-foot lengths, with white as the standard color. Contact a local distributor for pricing. royalbuildingproducts.com

4. Innovative Shower Base

The MTSB-6036SOHD shower base by MTI Baths is designed to conceal the position of an existing tub drain behind a wider top drain cover. The shower base measures 60 by 36 inches and is crafted from Lucite, a durable cross-linked cast acrylic, layered with fiberglass, resin, titanium, and wood to help prevent flexing. It may be specified with a left- or right-side drain, and either a stainless steel or white powder-coated hidden drain cover. The full base is available in white, bone, or biscuit, with either a glossy or white matte finish. Pricing starts at \$1,460. mtibaths.com

Products

5. Mixed-Frame Window Finishes

The Marvin Elevate Collection, previously known as Integrity Wood-Ultrex, now offers separate finish options for the frame and sash of each window. Customers can select from four available finishes—bare pine, clear coat, designer black, and prefinished white—with a total of 16 combinations possible. Styles include awning windows, casement, double-hung, glider, picture, round top, and specialty window frames. The windows have a wood interior and fiberglass exterior and arrive prefinished or painted and ready to install. Contact a local distributor for pricing. marvin.com

6. Light Solar Modules

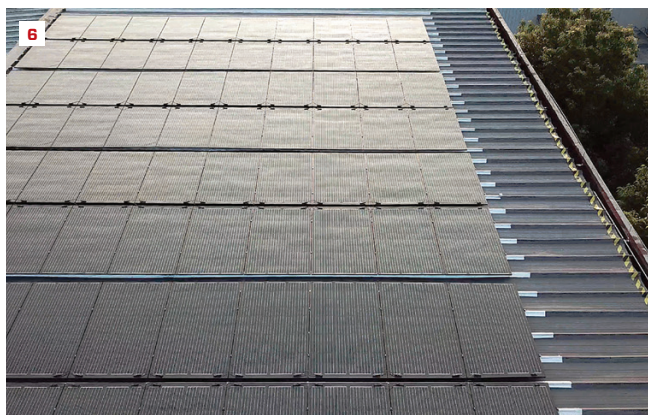
Sunflare's new solar energy offering, the LiteMount series of rackless solar modules, is an alternative to traditional silicon solar racks for metal roofs. The modules integrate seamlessly with metal-roof attaching systems and weigh less than 1 pound per square foot installed. They are rated to handle a wind load of up to 42 pounds per square foot and are shatterproof, as they have no glass coating. A bypass diode is included at every cell, which keeps the panel active in any level of sunlight. Contact a local distributor for pricing. sunflaresolar.com

7. Contemporary Cabinetry

MasterBrand Cabinets has added three new curated door styles to its Omega Cabinetry brand. The Kali and Kadey door styles both feature a shallow center panel with a wide perimeter, mixing modern and classic aesthetics. Jax (pictured, right) has a slim-line, mitered door and drawer front with flat center panels. In addition, the brand launched four new textured laminate finishes and two cool-toned color selections. Contact a local distributor for pricing. omegacabinetry.com

8. Re-engineered Subfloor Screws

Simpson Strong-Tie Strong-Drive WSV Subfloor screws were re-engineered from head to point to reduce driving torque, speed installation, and help eradicate the squeaking caused by poorly fastened subfloor sheathing. They feature a ribbed head design to countersink easily and a variable thread to ease driving torque and speed fastening when used with the Quik Drive auto-feed screw driving system. The screws are available in 1 3/4-, 2-, 2 1/2-, and 3-inch lengths and have a yellow zinc coating for interior applications. We found a box of 2,000 #9 1 3/4-inch WSV screws online for about \$80. strongtie.com



9



9. Liquid Roof Flashing Resin

CertainTeed's new SmartFlash One roof flashing resin is a one-component, UV-stable, fluid-applied solution for both steep- and low-slope-roof flashing details and repairs. The resin may be applied without a primer, and it can be resealed for future use. It comes in a five-gallon pail (covers 125 square feet) or a one-gallon pail (covers 25 square feet). The one-gallon pail is available on its own or as part of a Flash Pack, which includes resin, fleece, and application accessories. Contact a local distributor for pricing. certainteed.com

10



10. Laminated Timber Columns

Culpeper Wood Preservers manufactures laminated timber columns that offer an alternative to solid timber, fiberglass, and aluminum structural columns. The columns are made from treated southern-pine components joined with waterproof resorcinol adhesive. According to Culpeper, the columns are lighter and easier to handle than solid PT posts and are less likely to twist. They are available in cross sections from 4x4 to 12x12 and in two styles of turned post in 5- and 6-inch sizes. Contact a local distributor for pricing. culpeperwood.com

11



11. Capped Wood-Composite Decking

MoistureShield's new line of capped wood-composite decking, called Elevate, is targeted to the entry-level market. The wood composite is manufactured from 95% recycled content, and a protective cap shields the boards from impact, corrosion, and harsh weather. Elevate's 5/4 deck boards are available in 12- and 16-foot lengths in grooved profiles for hidden fasteners and in 20-foot lengths with a solid edge. Fascia boards come in 12-foot lengths. Customers can choose between two colors: Lake Fog (gray) and Canoe (brown). Pricing information will be available soon. moistureshield.com

12



12. Wood Siding Clips

Nova USA Wood Products developed its Exo-Clad Rainscreen QuickClips to accommodate natural swelling and shrinking of wood siding, regardless of the amount of moisture. Made from marine-grade extruded aluminum and fastened with #10 pan-head screws, the QuickClips work with hardwood siding, such as batu, ipe, and cumaru, as well as softwoods like cedar, redwood, and Douglas fir. Clips also provide a 3/4-inch stand-off from the structure and can be screwed right into the studs over housewrap. We found them online for \$1.90 each. novausawood.com