

BY VINCENT SALANDRO



1

1. Design-Forward Wall Panels

As its name suggests, Wilsonart's Wetwall Water-Proof Wall Panel System is suited for wet-area applications, such as shower walls and bath surrounds. The lightweight tongue-and-groove panels can be installed over gypsum board, green board, and fiber board, with an average installation time of 2½ hours. The resulting grout-free surface is easy to clean, according to Wilsonart. Panels are available in 15 designs. wetwall.com



2

2. Steel-Alternative Rebar

GatorBar Glass is a glass-fiber-reinforced composite rebar manufactured by Neuvokas Corp. Compared with steel, says the manufacturer, GatorBar Glass is two to four times stronger in tensile strength and seven times lighter in weight and won't rust, even in high-chloride concrete and highly corrosive applications. The manufacturer also claims GatorBar offers contractors better price stability than steel alternatives do. Contact Neuvokas Corp. for a quote. neuvokascorp.com



3



4

3. Flexible Engineered-Wood Forms

Designed for use in flatwork concrete forming applications, LP ArchForm Concrete Edge Forms from LP Building Solutions are made of engineered wood strands and faced with a resin-saturated overlay to resist moisture. According to LP, the lightweight 5/16-inch-by-12-inch-by-16-foot forms are well-suited to radius-forming and are flexible enough to curve around the contours of formed concrete projects such as patios, walkways, and pool decks. Contact a local distributor for pricing. lpcorp.com

4. Smart Air Cleaner

General Tools' Floor Air Filtration System automatically turns on when its infrared sensor identifies particles in the air as small as 1 micron, and then adjusts fan speed depending on the number of particles sensed. The unit has a replaceable interior filter—an LCD screen indicates when to change it—and a washable outer filter. A remote control (included) can be used to manually control the three-speed fan, and casters make the unit easy to move between and around jobsites. It's listed on the company's website for \$600. Optional activated carbon and HEPA filters are available. generaltoolsusa.com

Products

5. Heavy-Duty Job Storage

Crescent Tools' Jobox Site-Vault piano boxes and chests feature an upgraded three-point locking system. Boxes offer a chamfered lid, shelves rated for 1,000 pounds, and a built-in sidewall storage bin for frequently used items. A gas spring makes the lid easier to open and prevents it from slamming shut. The seven piano-box options range from 48 to 74 inches long and from 39 to 64 inches tall. MSRP for the 42-inch Heavy-Duty Chest (pictured) is \$635. crescenttool.com

6. Self-Cleaning Coating

Sto Corp.'s iQ Technology Coatings, including StoColor Lotusan (pictured), StoColor Climasan, and StoColor Dryonic, reportedly help protect against environmental degradation. According to the manufacturer, StoColor Lotusan creates a micro-textured and hydrophobic surface that has only a small contact area for dirt and water—allowing dirt to be easily carried away by rain—and that protects facades from algae and fungi. According to the manufacturer, Sto iQ Technology coatings also protect against air pollution, temperature damage, and UV-light damage. Pricing varies. stocorp.com

7. Self-Adhered Drainable WRB

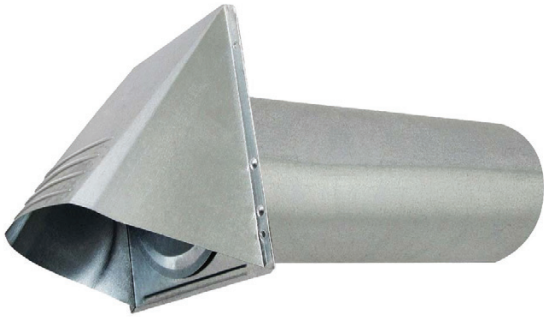
Benjamin Obdyke's HydroGap SA self-adhered drainable weather-resistive barrier has a continuous acrylic adhesive that seals around fasteners and penetrations, while 1mm spacers create a drainage path for bulk water. Benjamin Obdyke says the adhesive also contributes to tear resistance and diminishes the chance for ballooning and blow-off. The new WRB has a perm rating of 12, is UV-resistant for 120 days, and comes in 80-foot rolls. Contact local distributor for pricing. benjaminobdyke.com

8. Antibacterial, Air-Purifying Paint

Living Well paint from Sherwin-Williams features two new interior options: SuperPaint with Sanitizing Technology and SuperPaint with Air Purifying Technology. Both varieties provide long-lasting color and don't require special tools to apply, according to the manufacturer. SuperPaint with Sanitizing Technology contains antibacterial properties active for up to four years, while SuperPaint with Air Purifying Technology is designed to reduce ambient odors and VOCs. Pricing for both SuperPaint varieties starts at approximately \$65 per gallon. sherwin-williams.com



9



9. Airtight Vent Hood

Deflecto's 4-inch Galvanized Steel Vent Hood, Pipe, and Collar is suitable for venting a dryer or a bathroom fan. Made from steel to protect against corrosion, the fireproof ventilation accessory has a positive-action damper to improve efficiency and help keep cold air and rain from entering a home, according to Deflecto. We found it online for between \$6 and \$10. deflecto.com

10



10. Concrete Screw Anchors

Redesigned Tapcon concrete screw anchors are available with a star flat head and a hex head. The star-head recess eliminates bit slip during installation by providing six points of contact between the bit and the anchor. The hex-head screw anchors feature new ribs under the head that resist anchor spinouts and head snaps during installation, according to Tapcon. Both screws have a corrosion-resistant coating. The screws are available in $\frac{3}{16}$ - and $\frac{1}{4}$ -inch diameters and in lengths from $1\frac{1}{4}$ to 4 inches. Online, a 75-pack of $\frac{1}{4}$ -in. x $2\frac{1}{4}$ -in. star flat-head anchors with bit runs about \$22. tapcon.com

11



11. Shake and Slate Metal Roofing

ProVia's metal shake and slate roofing panels are 10% thicker than the industry average while weighing up to three times less than asphalt shingles. According to the manufacturer, the panels, which have a durable and fade- and chalk-resistant finish, are designed to withstand extreme weather conditions, meeting or exceeding ASTM and UL industry standards for resistance to corrosion, wind-driven rain, impact, and wind uplift up to 180 mph. Pricing varies based on project and region. provia.com

12



12. Hands-Free Faucet

Toto's Touchless Smart-Sensor Faucets are available in many of the manufacturer's spout styles, including the GE, GC (pictured), GM, Libella, Gooseneck, Axiom, Helix, and Standard. The touchless faucets feature Toto's Ecopower platform, which harnesses the energy of running water to power the faucets. The hands-free faucets replenish their charge with every use, and no minimum daily usage is required, translating to reduced electricity use, lower maintenance costs, and better ecology, according to the manufacturer. The faucets are also available with an electrical platform. Pricing varies based on faucet collection. toto.com