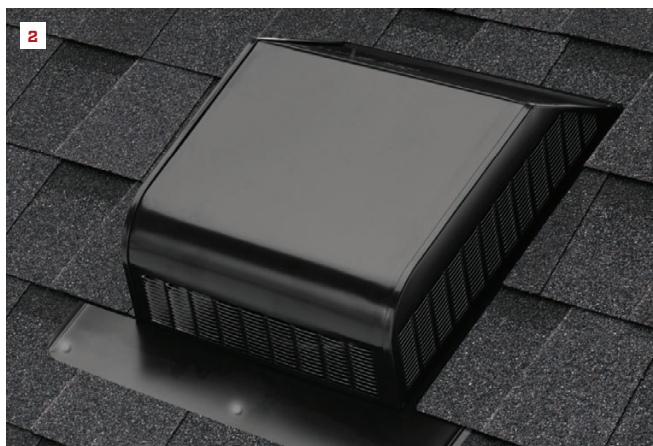


BY VINCENT SALANDRO



1. Versatile Paintable Panels

Barrette Outdoor Living's Decorative Screen Panels can be used as under-deck coverage or be applied in numerous interior and exterior applications. The impact- and scratch-resistant panels are available in two sizes—2 feet by 4 feet and 3 feet by 6 feet—and in numerous patterns. Made from polypropylene, the panels can be painted or trimmed, and they remain stable in extreme weather and temperature changes with minimal expansion or contraction, Barrette says. barretteoutdoorliving.com



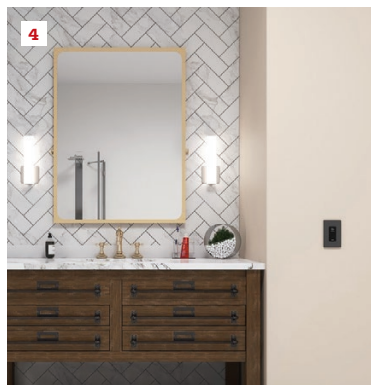
2. Roof Ventilation Solutions

TruRidge Pro 25, HighPoint AL 50 Slant Back, and HighPoint GL 50 Slant Back (pictured) from Atlas Roofing may help to reduce excessive attic heat and moisture for roof pitches 3/12 through 8/12. TruRidge Pro 25 provides the rigidity of a sectional ridge vent with a lightweight roll; HighPoint AL 50 and GL 50 vents have a durable, one-piece weathertight base and throat made from aluminum (AL 50) and galvanized steel (GL 50). atlasroofing.com



3. Dual Fuel Heating System

The Intelli-Heat Dual Fuel System from Mitsubishi Electric Trane HVAC US connects with any thermostatically controlled furnace. During periods of extreme cold, Intelli-Heat may switch to a home's gas furnace as needed using its intelligent switchover function. The unit connects to single-zone P-Series cooling-only or heat-pump units and multizone MXZ heat-pump units and is available in 18-, 24-, 30-, 36-, and 42-kBtu/h capacities. Hyper-Heating Inverter models provide 100% heating capacity down to 5°F outdoor ambient temperature and guaranteed operation to -13°F. mitsubishicomfort.com



4. Hands-Free Light Switch

Legrand's Wave Switch offers homeowners cleaner lighting control. Touchless technology allows users to turn lights on or off with a wave anywhere from 1 inch to 6 inches away from the switch. The Radiant-series Wave Switch is available in 15-amp and 20-amp versions; both feature screwless wall plates and come in metallic and standard color finishes. Pricing starts at \$70. legrand.us

Products

5. Indian Black Palm Cladding

PalmShell from Smith & Fong is derived from Indian black palm, a hard, dense wood with a fibrous grain. The manufacturer says the cladding is sustainable and durable and uses an easy-to-install groove/lap system that reportedly works well for rainscreen applications. Black palm's weather resistance allows PalmShell to be installed and finished using standard exterior-grade clear finishes. Cladding boards are milled in 96-inch lengths with a 3 1/4-inch width and 3/4-inch thickness. durapalm.com

6. Self-Adhered Waterproofing Underlayment

Zip System peel-and-stick waterproofing roofing underlayment from Huber Engineered Woods provides an additional layer of protection against water intrusion due to ice dams or wind-driven rain. The self-adhered underlayment is applied to roof sheathing and can be used in valleys, eaves, transitions, or the entire roof. It has an embedded pull cord to split the liner, requires no fasteners, covers up to 200 square feet per roll, and is slip resistant. Its rubberized asphalt composition seals around roof-covering nails. huberwood.com

7. Smart Control Switch

Part of a smart home-enabled product line developed by Panasonic and Swidget, the 20/40/60 Control Switch has a port that accepts a variety of Swidget inserts, such as a Wi-Fi control and an air-quality sensor, for remote or automatic operation of ventilation devices. A 4-wire interface allows for simple installation in single-pole or dry-contact applications. The switch has three timer settings—20, 40, and 60 minutes—that can be used without an insert. With a sensor insert, it can automatically turn a bathroom fan or an ERV on and off based on occupancy, air quality, or humidity. swidget.com

8. Thermoformed Countertops

Cambria's 6mm surface thickness allows for weight-sensitive applications, as well as for backlighting, thermoforming, and wall cladding. For use in curved applications, such as the reception desk pictured at right or kitchen islands, the quartz slabs are milled down by fabricators to 4mm before being thermoformed to the desired shape, according to the manufacturer. Available in 10 designs, Cambria's 6mm surfaces have the durable, low-maintenance, and nonabsorptive qualities of quartz. cambriausa.com



9



9. Window-First Installation Solution

DuPont's Tyvek IntegrationWrap is designed to integrate DuPont self-adhered window flashings with Tyvek weather-resistive barriers when the window has been installed first. Made from a coated, woven polypropylene material, the membrane incorporates additives to provide ultraviolet light resistance, though DuPont requires IntegrationWrap be covered within four months of installation. Maximum in-service temperature, according to the manufacturer, is 180°F. dupont.com

10



10. Dual-Layered Insulated Sheathing

LP NovaCore Thermal Insulated Sheathing combines sheathing and insulation, allowing for one-step installation. One-inch XPS foam and 7/16-inch OSB are bonded together to create an R-5 insulated wall panel that can be handled, cut, and drilled like OSB. Panels may be installed vertically and horizontally, provided that all edges are blocked or otherwise supported. NovaCore is available in nominal lengths of 8, 9, and 10 feet, and panels are reportedly backed by a 20-year warranty. lpcorp.com

11



11. Deck-Board Cladding

MoistureShield Vision and Meridian capped wood-composite decking lines are approved for use as both horizontal and vertical cladding, offering what the manufacturer says are durable, low-maintenance finishes that resemble natural hardwoods. Made with 95% recycled content, the solid, 1-inch-thick boards are protected against moisture absorption, warping, rotting, and damage from insects on all four sides. The cladding is available in 12-, 16-, and 20-foot lengths in 6-inch widths and nine color options. moistureshield.com/products/cladding

12



12. Architectural Siding and Trim Collection

The Hardie Architectural Collection comprises five Hardie Architectural Panels in nature-inspired textures and 14 metal Hardie Architectural trims. The manufacturer says that the fiber-cement panels are low maintenance, noncombustible, and weather resilient, and that they install more efficiently than traditional building materials. The collection is James Hardie's most significant expansion beyond wood-look exteriors. Textures include sea grass (shown), fine sand (with and without grooves), mounded sand, and sculpted clay. jameshardie.com