

BY VINCENT SALANDRO



1. Black Label Tropical Hardwoods

Tropical Forest Products' Black Label brand of curated tropical hardwoods offers certified-sustainable ipe, cumaru, jatoba, garapa, angelim, pedra, and tigerwood. According to Tropical Forest Products, the lumber is "harvested legally from demarcated forests" and verified by an independent third party that certifies origin, harvesting, and shipping. tropicalforestproducts.com

2. Minimalist Drawer System

Grass America's Vionaro drawers travel on a Dynapro concealed undermount slide system, which the manufacturer says provides a low opening pull force and smooth running performance using a synchronization mechanism and abrasion-resistant nylon rollers. The drawers are offered in four heights, three colors, and two closing options. grassusa.com



3. Inverter Heat Pump

The Deluxe wall-mounted single-zone system with H2i plus technology from Mitsubishi Electric Trane HVAC US comprises both a new indoor unit and a new outdoor unit. According to the manufacturer, the wall-mounted indoor unit has a high-performance coating that limits particle build-up on the heat exchanger, which reportedly helps maintain efficiency and reduce maintenance. The outdoor unit is equipped with inverter technology, which the maker says modulates to maintain a consistent indoor temperature and provides 100% heating capacity at outdoor temperatures as low as 5°F and upward of 76% capacity at -13°F. metahvac.com



4. Versatile Residential ERV

Greenheck's Sync-180 is a low-profile, high-efficiency, cold-weather-rated ERV that offers a 75- to 200-cfm range with three high-speed options. Each airstream has an independent centrifugal blower powered by a direct-drive EC motor, which adjusts speed with increased static pressure to maintain flow rates as the filter or core gets dirty. Pairing with the company's PrecisionSync Controller allows the unit to measure the airflow capacity of the installation and dial-in a precise airflow. Available online for \$1,400. greenheck.com

Products

5. Recycled Waste Tile

Kohler Abstra tiles are made from nearly 100% recycled waste materials. The collection offers two styles: an abstract-patterned tile (Abstra Feature) and an unadorned field tile (Abstra Standard). Both are available in 3-by-12-inch, 4-by-4-inch, and 6-by-12-inch field sizes in brushed and matte finishes and are suited for any vertical dry interior application; tiles with the matte finish can also be used outdoors and in wet spaces, such as showers and submerged areas. wastelab.kohler.com

6. Mobile 3D Imaging Technology

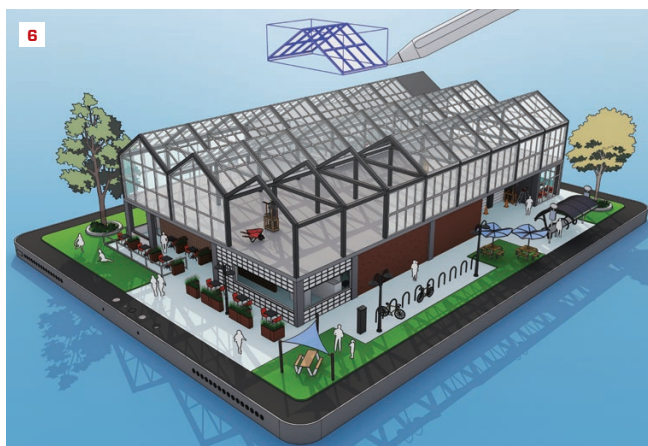
SketchUp for iPad, an app from Trimble, combines 3D modeling capability with the ease of sketching by hand to enable professionals to create and collaborate on projects from anywhere. SketchUp models that are stored in TrimbleConnect automatically sync across devices so project stakeholders can access details on any device. Features include Autoshape, which transforms doodles into 3D shapes and configurable components, and Markup, where users can capture real-time client feedback by overlaying annotations. A SketchUp subscription costs \$119 per year. trimble.com

7. Durable Exotic Hardwood Flooring

Solid kempas, which has an orange-brown hue, is the newest addition to Elemental Hardwoods' premium line of exotic hardwood flooring. Sourced under Forest Stewardship Council forest management standards, the select-and-better-grade kempas is 100% heartwood and has a Janka hardness rating of 1710, harder than domestic oak and maple, according to Elemental. The flooring comes prefinished with a 15% to 20% low-gloss finish and is available in 3/4-inch-by-3 1/2-inch boards in lengths of 1 to 6 feet, with 17.44 square feet per box. elementalhardwoods.com

8. Stainless Steel Range Hood

The black stainless steel WM-590 Modern Series wall-mounted range hood from Hauslane is available in 30-inch and 36-inch options. The canopy-style hood has a single-blower motor with three speed settings—minimal, everyday, and heavy-duty—LED-lit buttons, and dishwasher-safe baffle filters. The hood's adjustable height makes it ideal for 9-foot kitchen ceilings; an extension kit for 10-foot ceilings is sold separately. MSRP is \$1,040. hauslane.com





9

9. Curved Bathroom Faucet

The Curve collection of faucets from Isenberg features arched spouts that extend away from the wall and stretch out over sink basins. The faucets are offered with left or right installation configurations and with hands-free sensors or deck-mounted handles. The bathroom faucet is available in chrome, brushed nickel, matte black, and 20 ceramic-based color finishes. isenbergfaucets.com



10

10. Rot-Preventing Deck Spacers

Deck2Wall Spacer model SWS is now approved for use with Spax Powerlags. The approved screws are available in 5/16-inch and 5/8-inch diameters and T-Star and hex-drive heads. The polypropylene spacers are designed to be installed between a deck ledger and the house to create a gap that allows water and debris to flow through, promoting circulation and drying while preventing rot and decay. A 12-pack of 5/8-inch-diameter spacers costs approximately \$28. deck2wallspacer.com



11

11. Dark Continuous Insulation

Thermafiber RainBarrier Dark mineral wool insulation from Owens Corning sports an adhesively bonded dark-colored fiberglass facing meant to make the continuous insulation less visible in open-joint cladding applications. The maker says the facing material isn't prone to the cracking that can occur with more rigid materials. Like other RainBarrier products, Dark 45 and Dark HD are noncombustible, fire-resistant, and vapor permeable and contain a minimum 70% recycled content, according to the manufacturer. owenscorning.com/rainbarrier



12

12. Secure Rooftop Rack Lock

The tumblers on Bolt Lock's One-Key Lock Technology Cable Locks are crafted to memorize a vehicle's ignition key with one complete turn of the key, allowing contractors to safely secure ladders on rooftop racks, without adding another key to the ring. Weatherproof and designed to repel dirt and moisture, according to the manufacturer, the cable lock has a 6-foot-long coil wire coated with 1/4-inch-thick black vinyl and a double ball-bearing lock mechanism. Locks are year/make/model specific and are available for most General Motors, Ford, Ram/Jeep, and Toyota vehicles. Contact a local retailer for pricing information. boltlock.com